



COOLANT MANAGEMENT

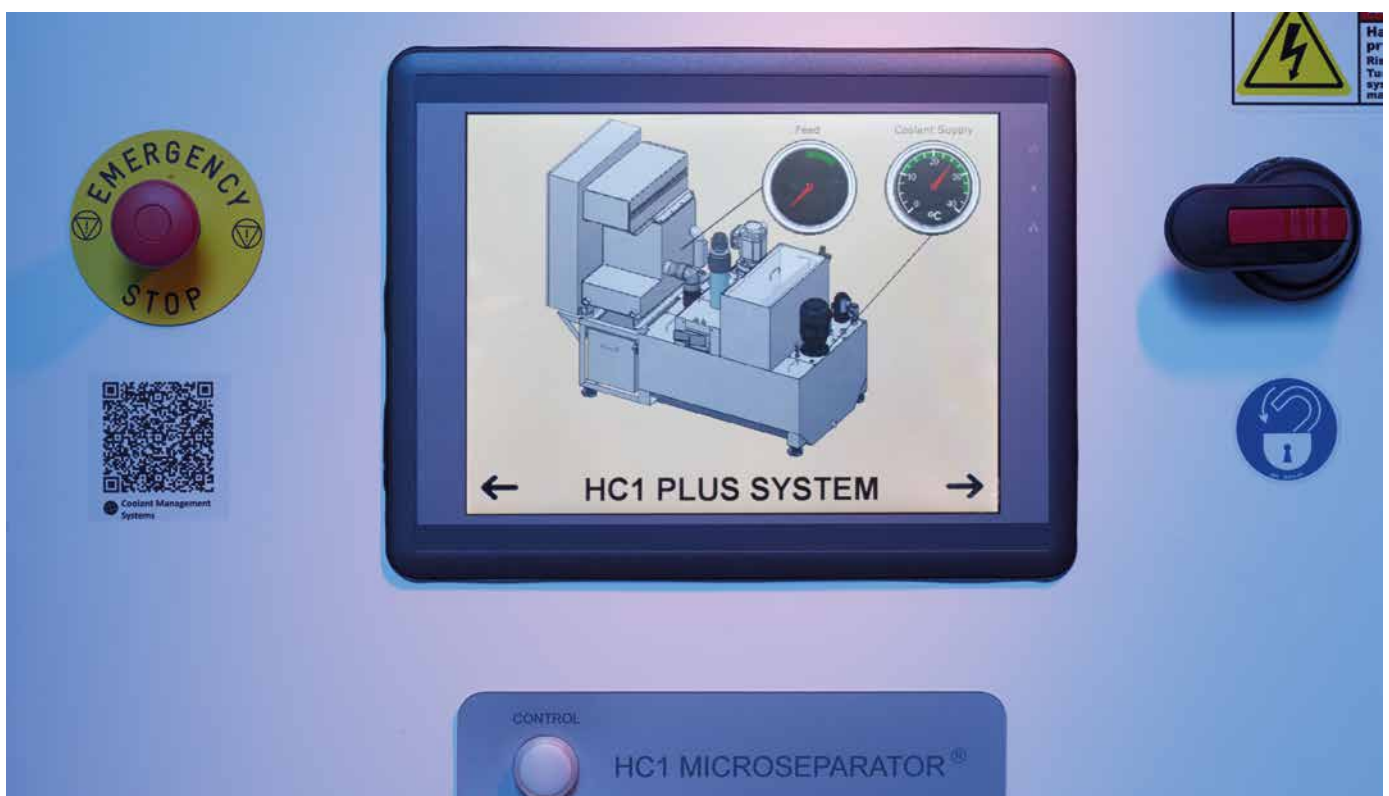
AND DEBRIS REMOVAL SYSTEMS

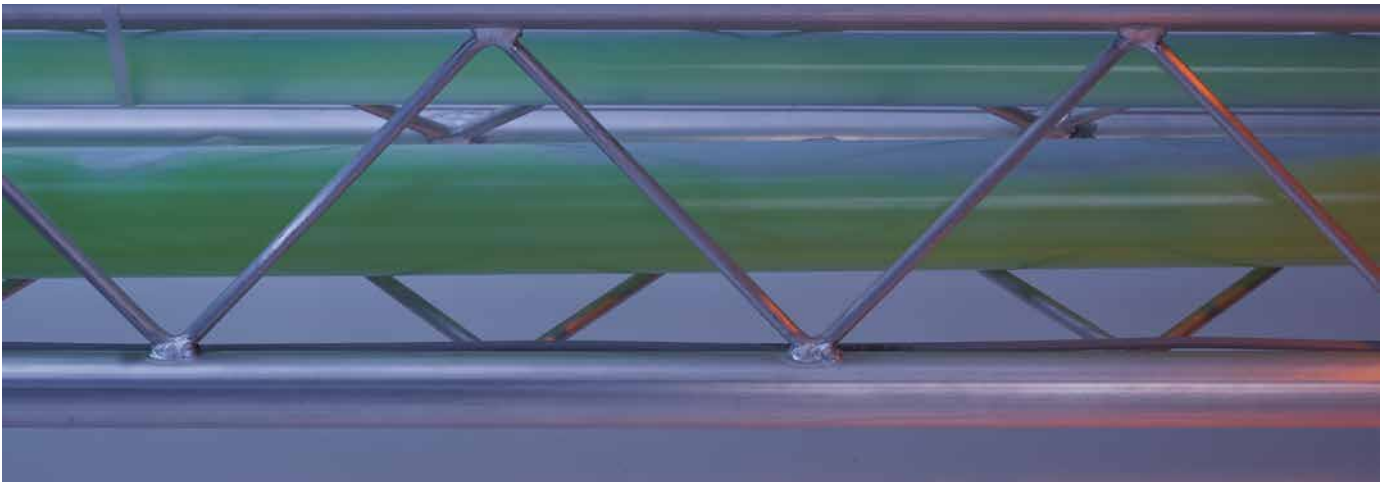
COOLANT MANAGEMENT

Machining coolants play a critical role in high volume lens manufacturing. Monitoring, managing, and recycling fluids from lens production improves productivity, saves money through optimized tool life, and reduces machine downtime, coolant concentrate purchases and minimizes waste and disposal costs. Coolant-management and chip removal systems by Bazell Technologies®, are available for a range of production scenarios, from a single line to mass manufacturing. The systems guarantee optimal lubrication for increased machining speeds, as well as a safe, clean working environment for continuous, around-the-clock production of all lens format.

These systems provide:

- Accurate coolant pressure and flow control for effective debris evacuation from the cutting chamber
- Industrial grade PLC controls with intuitive touchscreen interface
- Heavy gauge, self-cleaning stainless steel reservoir with positive counter current flow eliminating surface and bottom debris accumulation
- All are optimized for the most modern processes (Digital/ART)





HC3/HC3 PLUS/HC6/HC6 PLUS

Automated coolant cleaning system for organic materials. Seamlessly integrates with Pump Stations, Chip Separators, or Compactor Assemblies. Designed for operation remote from generators for optimum use of surfacing laboratory space. HC3/HC3 Plus supports up to three generators; the HC6/HC6 Plus* is for mass manufacturing environments, supporting up to six generators.

* For high % volumes of CR39



	HC3	HC3 Plus
Productivity:	PC/HI: up to 300 lenses/hour CR: up to 200 lenses/hour	Up to 300 PC/HI/CR lenses/hour
Energy requirements	208-400 V; 50/60 Hz; max. 17,9 kVA; 3 phase + neutral + ground; Fuse 35 A	208-400 V; 50/60 Hz; max. 17,9 kVA; 3 phase + neutral + ground; Fuse 35 A
Dimensions (wxdxh)	Tank: 1601 x 801 x 1270mm; 63 x 32 x 50 inch Centrifuge + Stand: 1454 x 863 x 2324mm; 57 x 34 x 91 inch Control Panel: 900 x 304 x 1613 mm; 35 x 12 x 64 inch	Tank: 1601 x 801 x 1270 mm; 63 x 32 x 52 inch Centrifuge + Stand: 1454 x 863 x 2561 mm; 57 x 34 x 101 inch Control Panel: 900 x 304 x 1613 mm; 35 x 12 x 64 inch
Weight	Tank: 360 kg; 794 lb Centrifuge + Stand: 800 kg; 1764 lb Control Panel: 110 kg; 243 lb	Tank: 360 kg; 794 lb Centrifuge + Stand: 1090 kg; 2403 lb Control Panel: 110 kg; 243 lb
Compressed air	6 bar, dried, oil-free, approx. 28 l/min	6 bar, dried, oil-free, approx. 28 l/min



FEATURES + BENEFITS

- Achieve maximum productivity from generator
- Minimized routine cleaning: no generator interruptions during production
- Centrifuge self-cleans without stopping production
- Automatic chip separation or compacting
- Tanks with anti-sedimentation system substantially reduce cleaning
- UL508A construction
- Continuous high pressure fluid delivery to generator
- Automatic water makeup, coolant mixing, and additive dosing
- Simple alarm display with downloadable data logs
- Intuitive operator interface
- Automatically maintains both coolant levels and proportions



HC6

PC/Hi: up to 600 lenses/hour
CR: up to 400 lenses/hour

400 V; 50/60 Hz; max. 28,4 kVA; 3 phase + neutral + ground;
Fuse 50 A

Tank: 1532 x 1534 x 1538 mm; 60 x 61 x 61 inch
Centrifuge + Stand: 1454 x 863 x 2836 mm;
57 x 34 x 112 inch x2
Control Panel: 1700 x 405 x 1800 mm; 67 x 16 x 71 inch

Tank: 1020 kg; 2249 lb
Centrifuge + Stand: 990 kg; 1984 lb x2
Control Panel: 315 kg; 695 lb

6 bar, dried, oil-free, approx. 84 l/min

HC6 Plus

Up to 600 PC/Hi/CR lenses/hour

400 V; 50/60 Hz; max. 28,4 kVA; 3 phase + neutral + ground;
Fuse 50 A

Tank: 1532 x 1534 x 1538 mm; 60 x 60 x 61 inch
Centrifuge + Stand: 1454 x 863 x 3073 mm;
57 x 34 x 121 inch x2
Control Panel: 405 x 1700 x 1800 mm; 16 x 67 x 71 inch

Tank: 1020 kg; 2249 lb
Centrifuge + Stand: 1140 kg; 2513 lb x2
Control Panel: 315 kg; 695 lb

6 bar, dried, oil-free, approx. 84 l/min



Integrated Pump Station / Pump Station



Chip Separator



WEIMA Briquette press for swarf management

PERIPHERAL EQUIPMENT

Integrated and Standard Pump Station

Transport all fluids and debris through an overhead pipeline to a single collection point (Chip Separator), eliminating the need for tanks and debris bins in the surfacing area. With the smallest footprint possible, it allows positioning between conveyors.

Chip Separator

Traps and separates fluids mixed with chip and tape debris, maximizing water and coolant recovery and reuse. Chip debris automatically discharges to debris bins or conveyors when used with a briquetter.

WEIMA Briquette Press

The WEIMA Briquette press is an ideal complement to the Coolant Management Systems for unrivaled swarf management. The volume of input material can be reduced by up to 12.5:1. Reduces waste-material handling and labor, saves money on waste disposal costs, and recovers up to 50% more coolant.

The WEIMA Briquette press is available in two configurations.

- TH800 Vario works with two HC6/Plus Systems
- TH600 Vario works with one HC6/Plus System or 2 HC3/HC3 PLUS Systems

Lens debris is automatically transported from Chip Separators to the WEIMA Briquette press. Recovered coolant from the briquetting process is pumped back to the HC tank(s).

TECHNICAL INFORMATION

	Power	Dimensions (wxdxh)	Weight	Air
Integrated Pump Station	Provided by VFT-orbit-2	310 x 1170 x 824 mm 13 x 43 x 33 in	80 kg/176 lbs	4,2 bar @ 28 l/m 60 psi @ 1 SCFM
Standard Pump Station	208 V, 15 A, 60 Hz 400 V, 15 A, 50 Hz	310 x 1170 x 824 mm 13 x 43 x 33 in	80 kg/176 lbs	4,2 bar @ 28 l/m 60 psi @ 1 SCFM
Chip Separator	Provided by Microseparator system	1424 x 1016 x 1780 mm 56 x 40 x 70 inch	255kg/562lb	Provided by Microseparator System
WEIMA TH600 Vario Briquette press	460 V, 35 A, 60 Hz 400 V, 40 A, 50 Hz	2300 x 2118 x 1553 mm 90 x 84 x 62 in	1000 kg/2205 lbs	5,2 bar @ 56 l/m 75 psi @ 2 SCFM
WEIMA TH800 Vario Briquette press	460 V, 80 A, 60 Hz 400 V, 80 A, 50 Hz	2300 x 2069 x 2088 mm 90 x 81 x 82 inch	1100 kg/2430 lbs	5,2 bar @ 56 l/m 75 psi @ 2 SCFM

CONFIGURATIONS

modular customized to your lab specific needs

	HC3	HC3 PLUS	HC6	HC6 Plus
Generators supported	Up to 3	Up to 3	Up to 6	Up to 6
Pump station required	1 per generator	1 per generator	1 per generator	1 per generator
Chip Separator with tank	1 per generator	1 per generator	1 per generator	1 per generator
WEIMA TH600 Vario Briquette press	One per 2 HC3	One per 2 HC3 Plus	One per HC6	One per HC6 Plus
WEIMA TH800 Vario Briquette press	-	-	One per 2 HC6	One per 2 HC6 Plus

CONTACT

Satisloh AG
Neuhofstrasse 12
CH- 6340 Baar
Switzerland
Phone: +41 (0) 41766 16 16
Email: info@satisloh.com

www.satisloh.com

North America

Phone: +1 262 255 6001
Email: info.usa@satisloh.com
Phone: +49 (0) 6441 912 0
Email: info.de@satisloh.com
Phone: +852 27 56 7711
Email: info.asia@satisloh.com
Phone: +55 (24) 2233 8600
Email: info.latam@satisloh.com

Europe

Asia

Latin America

Service

+1 262 255 6001
service.usa@satisloh.com
+49 (0) 6441 912 222
service.de@satisloh.com
+852 27 56 7654
service.asia@satisloh.com
+55 (24) 2233 8686
servicio.latam@satisloh.com

satisloh®